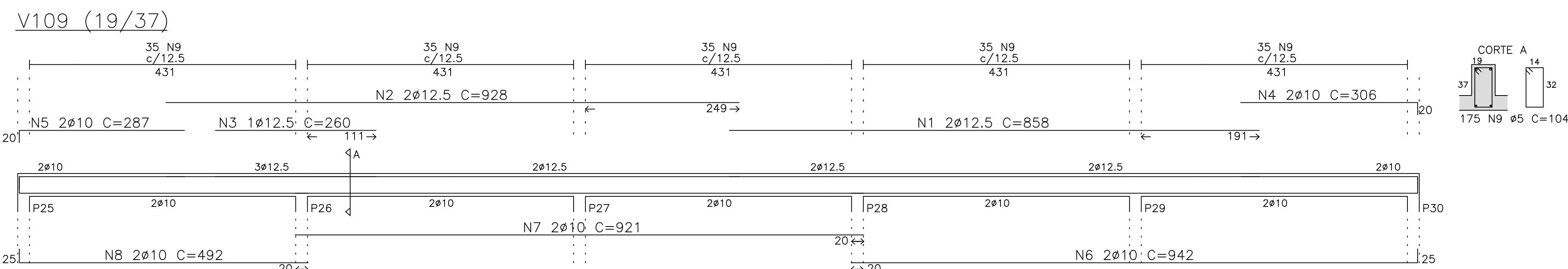
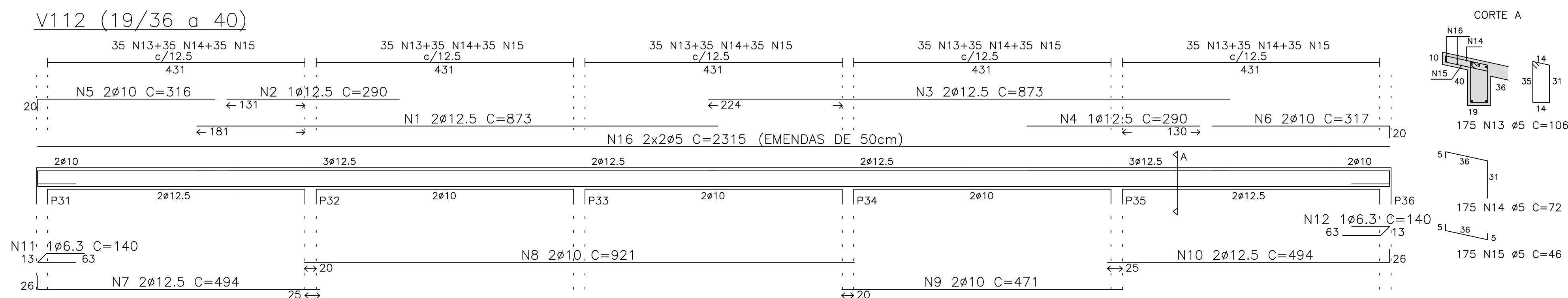
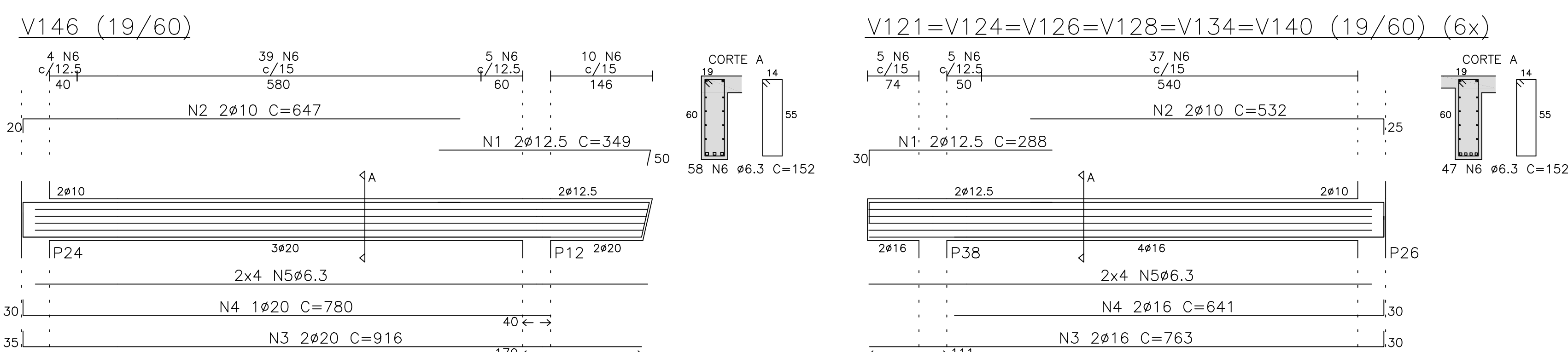
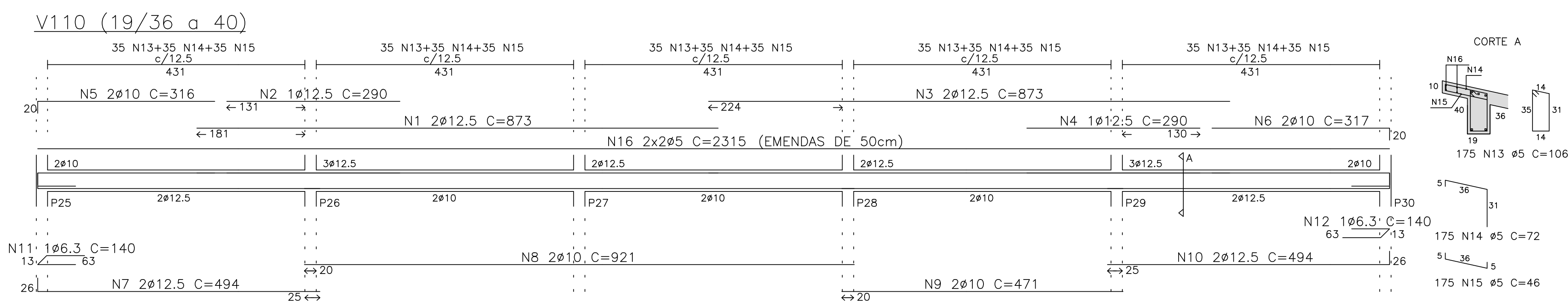


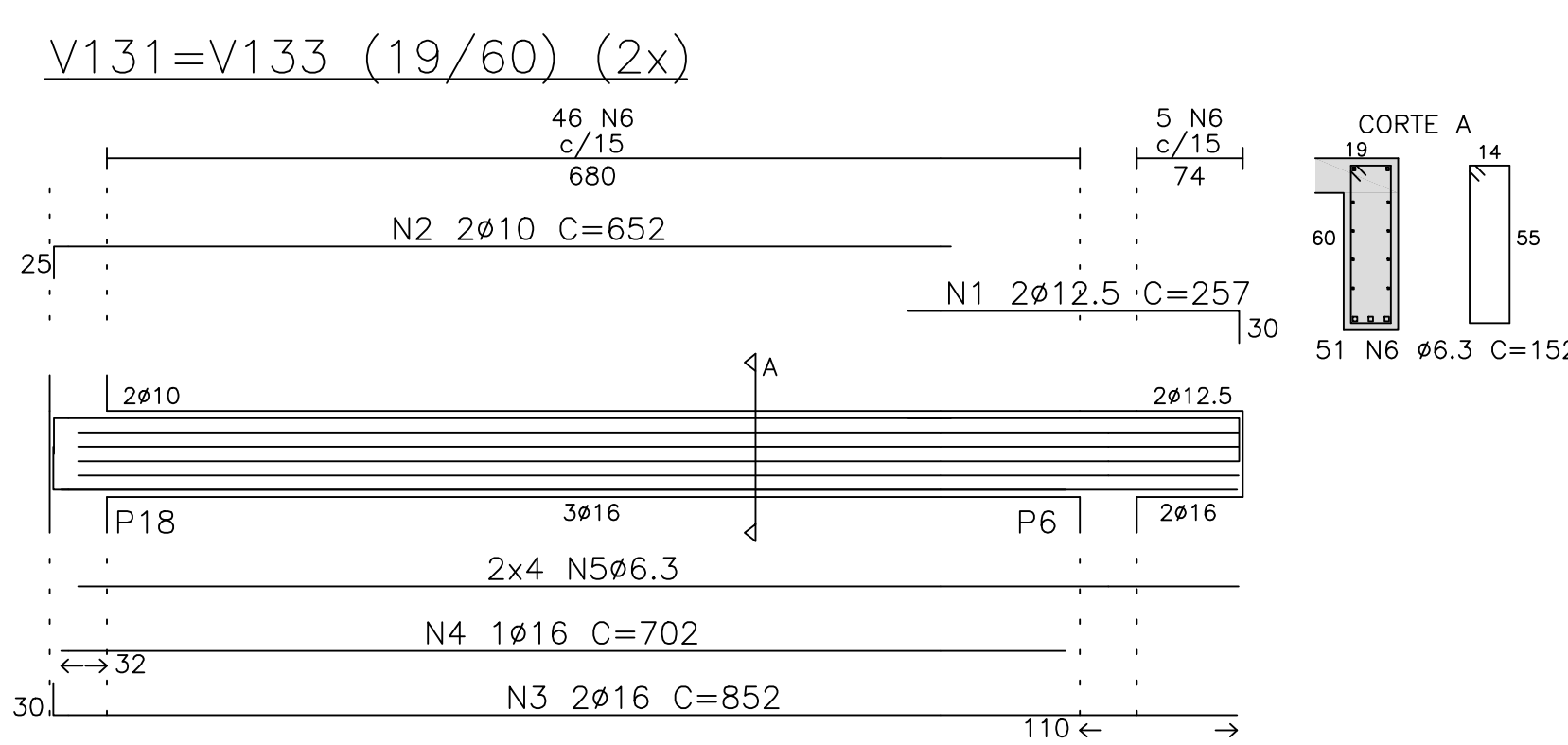
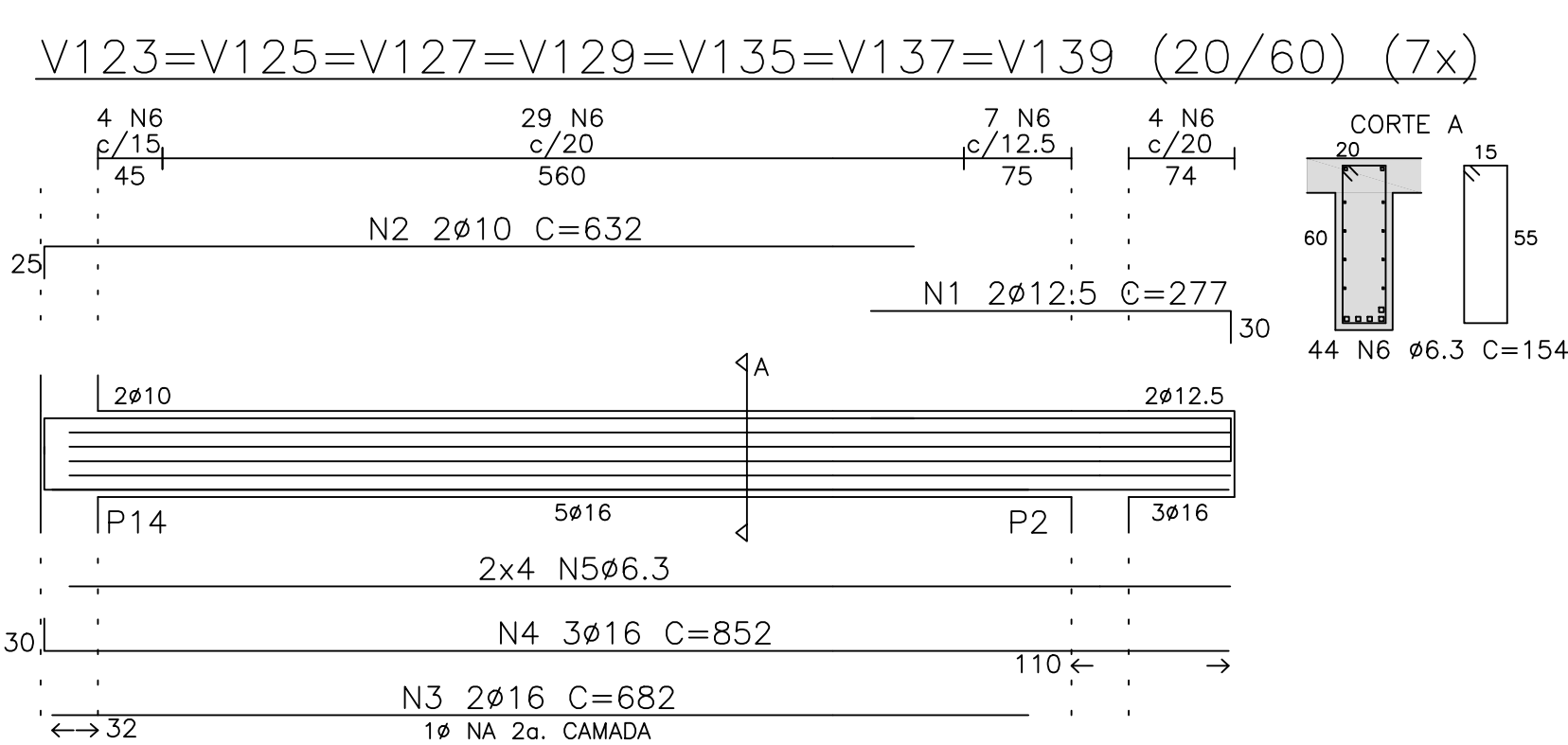
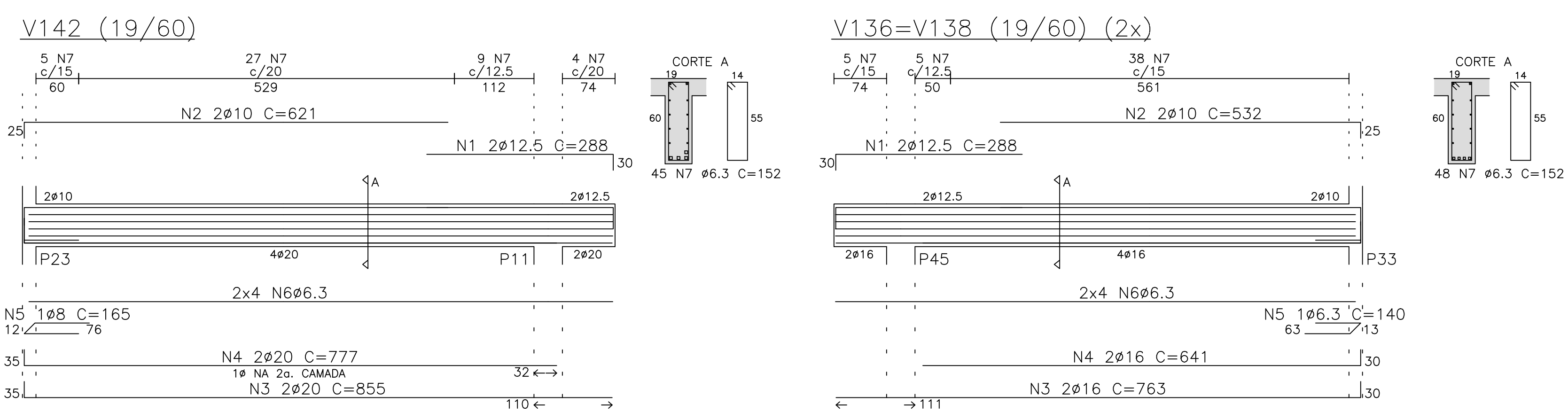
ESC. PLOT. 1:20	
A0 841x1189	
CORES/ESP.	
RED	0,20
YELLOW	0,50
GREEN	0,30
CYAN	0,40
BLUE	0,30
MAGENTA	0,10
WHITE	0,70
COR 8	0,30



v109				
N	ϕ	Q	UNI	TOTAL
1	12.5	2	858	1716
2	12.5	2	928	1856
3	12.5	1	260	260
4	10	2	306	612
5	10	2	287	574
6	10	2	942	1884
7	10	2	921	1842
8	10	2	492	984
9	5	175	104	18200



YTH	N	\bar{Q}	Q	UNI	TOTAL
1	12.5	2	873	1746	
2	12.5	1	290	290	
3	12.5	2	873	1746	
4	12.5	1	290	290	
5	10	2	316	632	
6	10	2	317	634	
7	12.5	2	494	988	
8	10	2	921	1842	
9	10	2	471	942	
10	12.5	2	494	988	
11	6.3	1	140	140	



V121=V124=V126= V128=V134=V140 (6x)				
N	Ø	Q	UNI	TOTAL
1	12.5	2	288	576
2	10	2	532	1064
3	16	2	763	1526
4	16	2	641	1282
5	6.3			5892
6	6.3	47	152	7144

V123=V125=V127=V129=				
V135=V137=V139 (7x)				
N	Ø	Q	UNI	TOTAL
1	12.5	2	277	554
2	10	2	632	1264
3	16	2	682	1364
4	16	3	852	2556
5	6.3			6618
6	6.3	44	154	6776

V131=V133			(2x)	
N	φ	Q	UNI	TOTAL
1	12.5	2	257	514
2	10	2	652	1304
3	16	2	852	1704
4	16	1	702	702
5	6.3			6618
6	6.3	51	152	7752

V136=V138			(Zx)	
N	Ø	Q	UNI	TOTAL
1	12.5	2	288	576
2	10	2	532	1064
3	16	2	763	1526
4	16	2	641	1282
5	6.3	1	140	140
6	6.3			5973
7	6.3	48	152	7296

V142				
N	ϕ	Q	UNI	TOTAL
1	12.5	2	288	576
2	10	2	621	1242
3	20	2	855	1710
4	20	2	777	1554
5	8	1	165	165
6	6.3			6708
7	6.3	45	152	6840

V146				
N	ϕ	Q	UNI	TOTAL
1	12.5	2	349	698
2	10	2	647	1294
3	20	2	916	1832
4	20	1	780	780
5	6.3			7205
6	6.3	58	152	8816

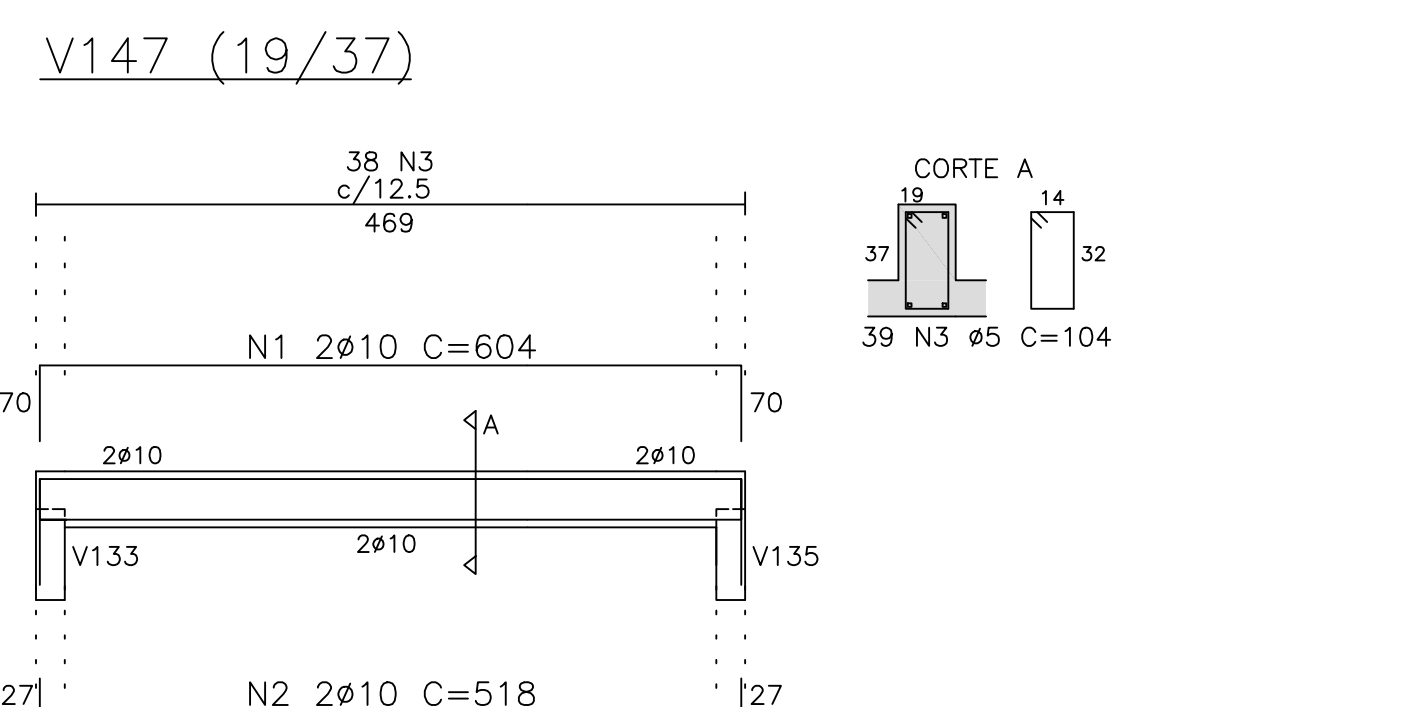
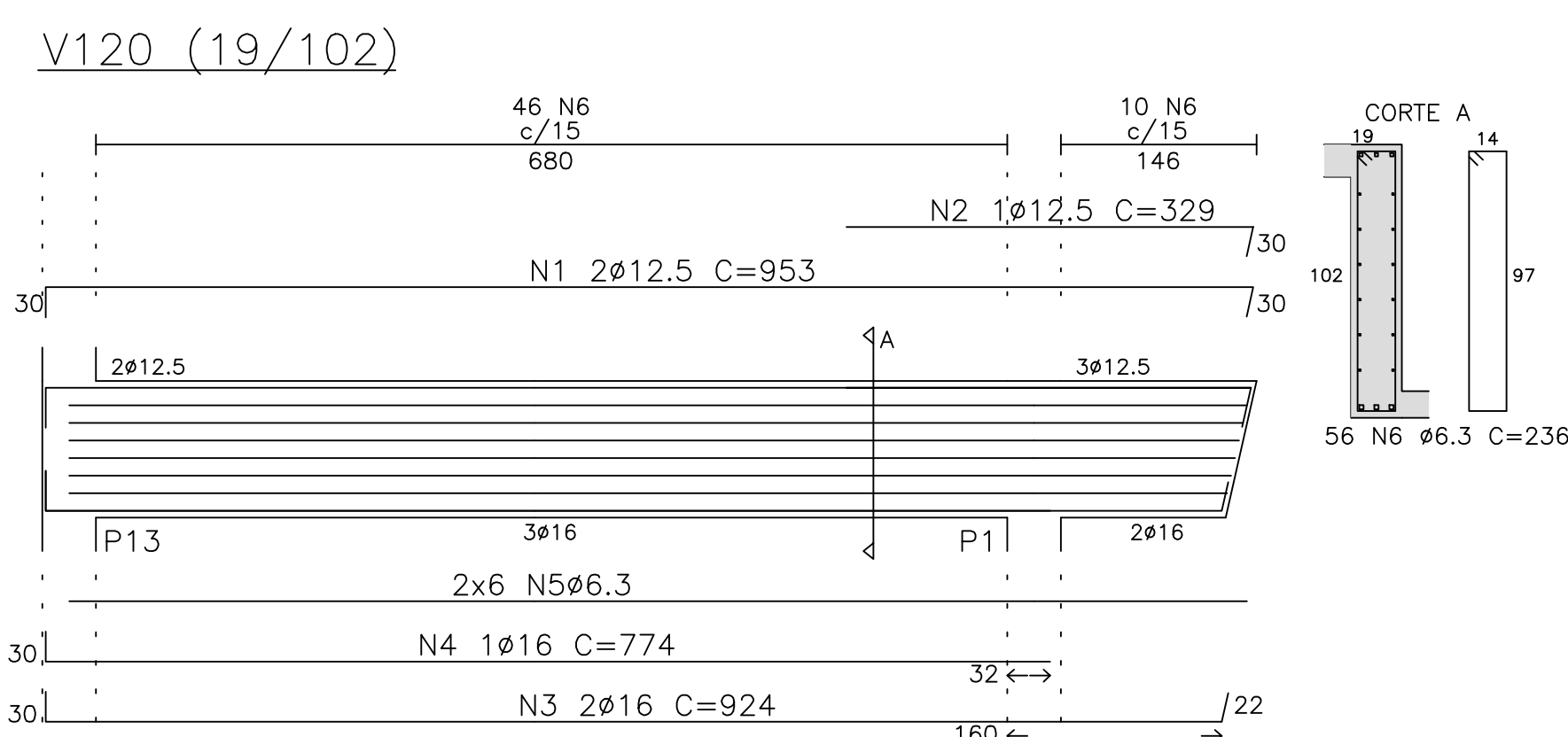
V147				
N	ϕ	Q	UNI	TOTAL
1	12.5	2	349	698
2	10	2	647	1294
3	20	2	916	1832
4	20	1	780	780
5	6.3			7205
6	6.3	58	152	8816

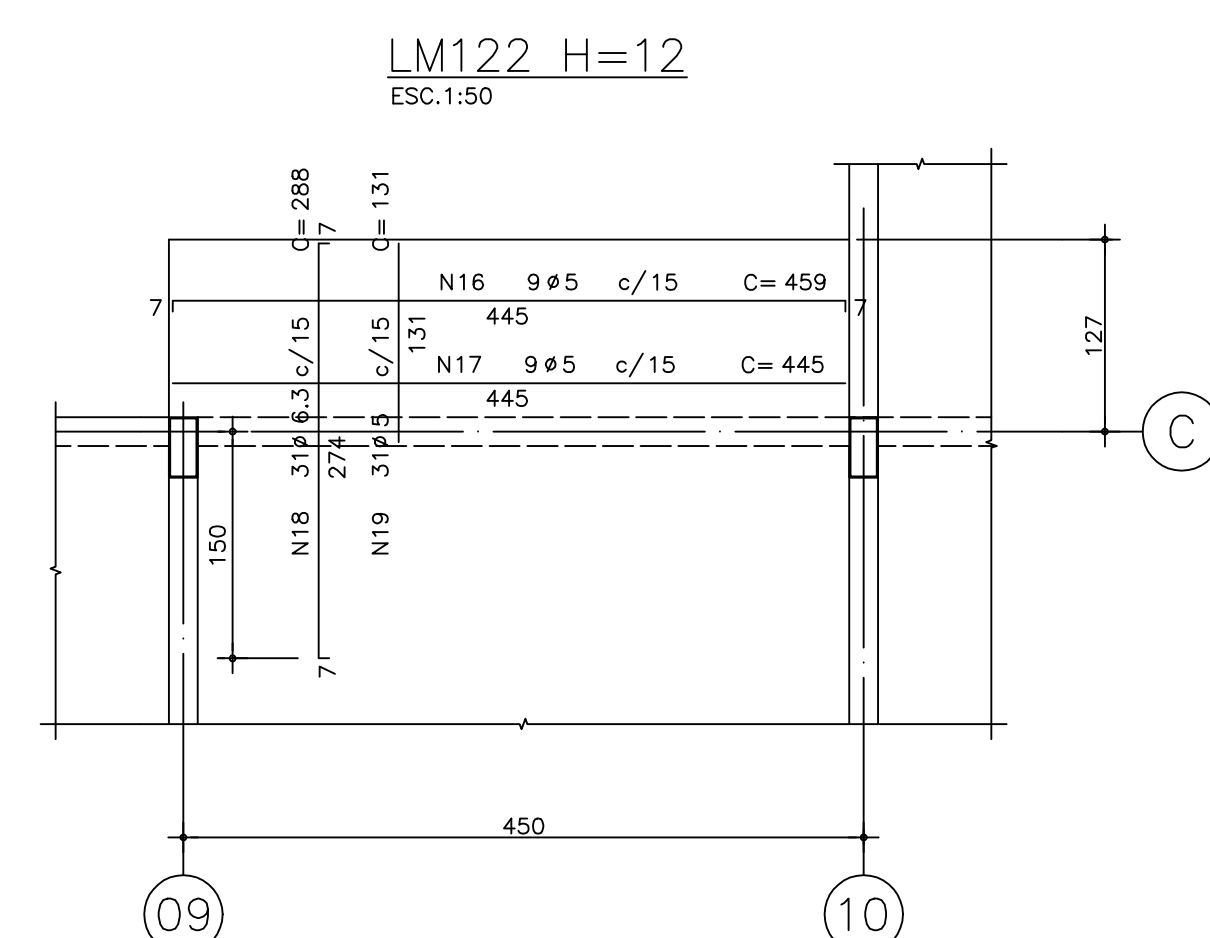
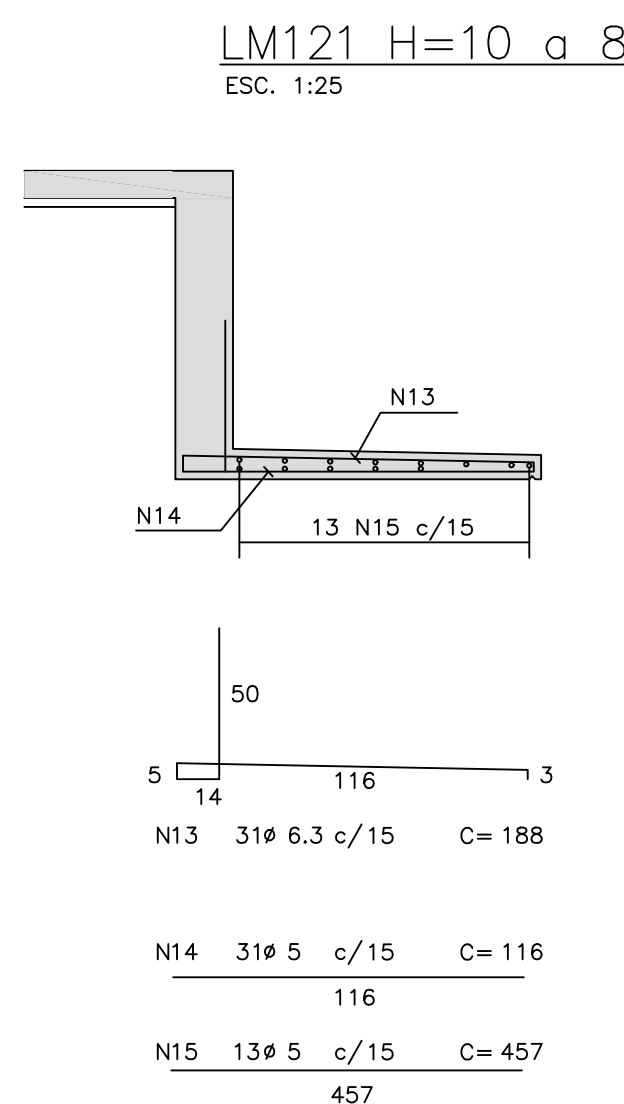
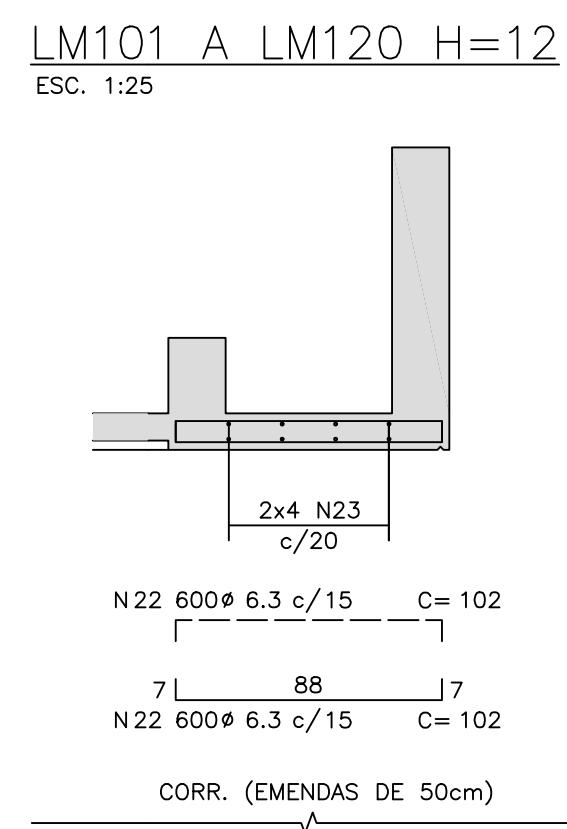
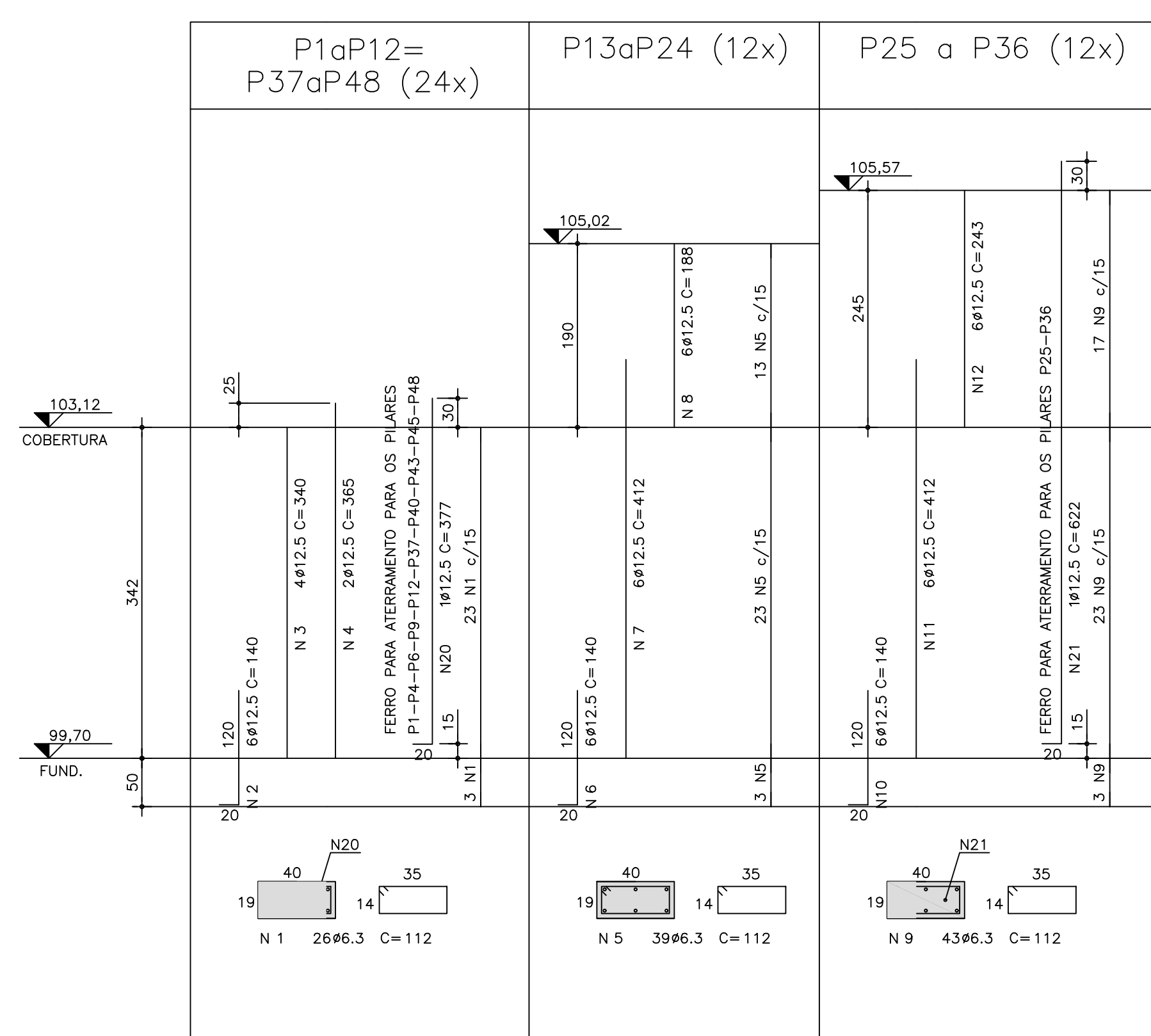
N	Ø	Q	UNI	TOTAL
1	10	2	604	1208
2	10	2	518	1036
3	5	39	104	4056

RESUMO DAS VIGAS DA
COBERTURA (02/02)

ACO	Ø	COMPR(cm)	PESO(kg)
60B	5	78366	126

50A	6.3	281685	705
50A	8	165	1
50A	10	38744	244
50A	12.5	28951	290
50A	16	57338	918
50A	20	5876	147
50A	25	—	—
PESO TOTAL (kg)			2431





LISTA DE FERROS			
POS.	QNTD.	COMPRIMENTO	
		UNIT.	TOTAL
1	6,3	112	6916
2	12,5	144	20160
3	12,5	96	340
4	12,5	48	365
5	6,3	112	5232
6	12,5	72	10780
7	12,5	72	10780
8	12,5	72	10780
9	6,3	516	13536
10	12,5	72	10780
11	12,5	72	10780
12	12,5	72	10780
13	6,3	31	188
14	5	31	116
15	5	13	45
16	5	459	5941
17	5	9	445
18	5	31	238
19	12,5	31	10780
20	6,3	10	377
21	12,5	2	622
22	6,3	1260	12240
23	5	8400	75200

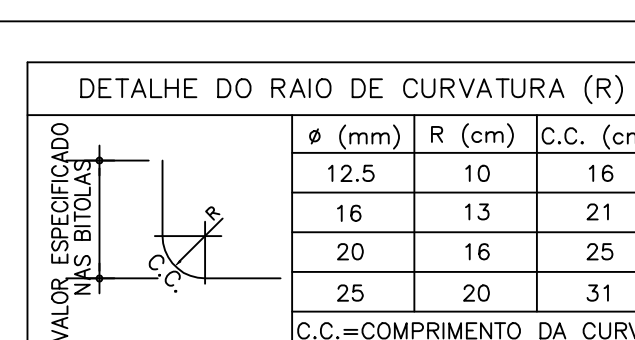
RESUMO DE ACO C.A. 50		
Ø	COMPRIMENTO (m)	PESO (kg)
6.3	3172.52	793
8		
10		
12.5	1858.54	1859
16		
20		
25		
TOTAL (kg)		2652

RESUMO DE ACO C.A. 60		
Ø	COMPRIMENTO (m)	PESO (kg)
5	969.34	149
6		
TOTAL (kg)		149

[illegible]

NOTAS:

01-CONCRETO= fck \geq 25 MPa
02-AÇO= CA-50 - fyk=500 MPa
CA-60 - fyk=600 MPa
03-MEDIDAS EM cm, NÍVEIS EM m.
04-NÃO TIRAR MEDIDAS EM ESCALA.
05-CONFIRMAR MEDIDAS NO LOCAL.
06- COBRIMENTO=2,5cm.



RESPONSÁVEL PELA IMPLANTAÇÃO DO PROJETO

SECRETARIA DE HABITAÇÃO E PLANEJAMENTO URBANÍSTICO
ARQ. EDMAR BESSI
DES. DEUBLES BACHIEGA

CR-1E - PADRÃO ESTACA

PREFEITURA DO MUNICÍPIO DE JAHU				
ESCOLA - NOME/LUGAR TERREIRO DIST. POTUNDUA - JAO/SP			No. LOTE 01	
INTERVENÇÃO OBRA NOVA DE CRECHE			ESCALA ARQUITETURA PE - EST	
ESTIMATIVA TÉCNICA PROJETO EXECUTIVO DE ESTRUTURA		TIPO PROJETO PAD CR-1E	DATA MAR/25	
CONTEUDO ARMARÇÃO DAS VIGAS DA COB. (02/02), LAJES E PILARES		ESCALA INDICADA	FOLHA 08/08	REVISÃO 00